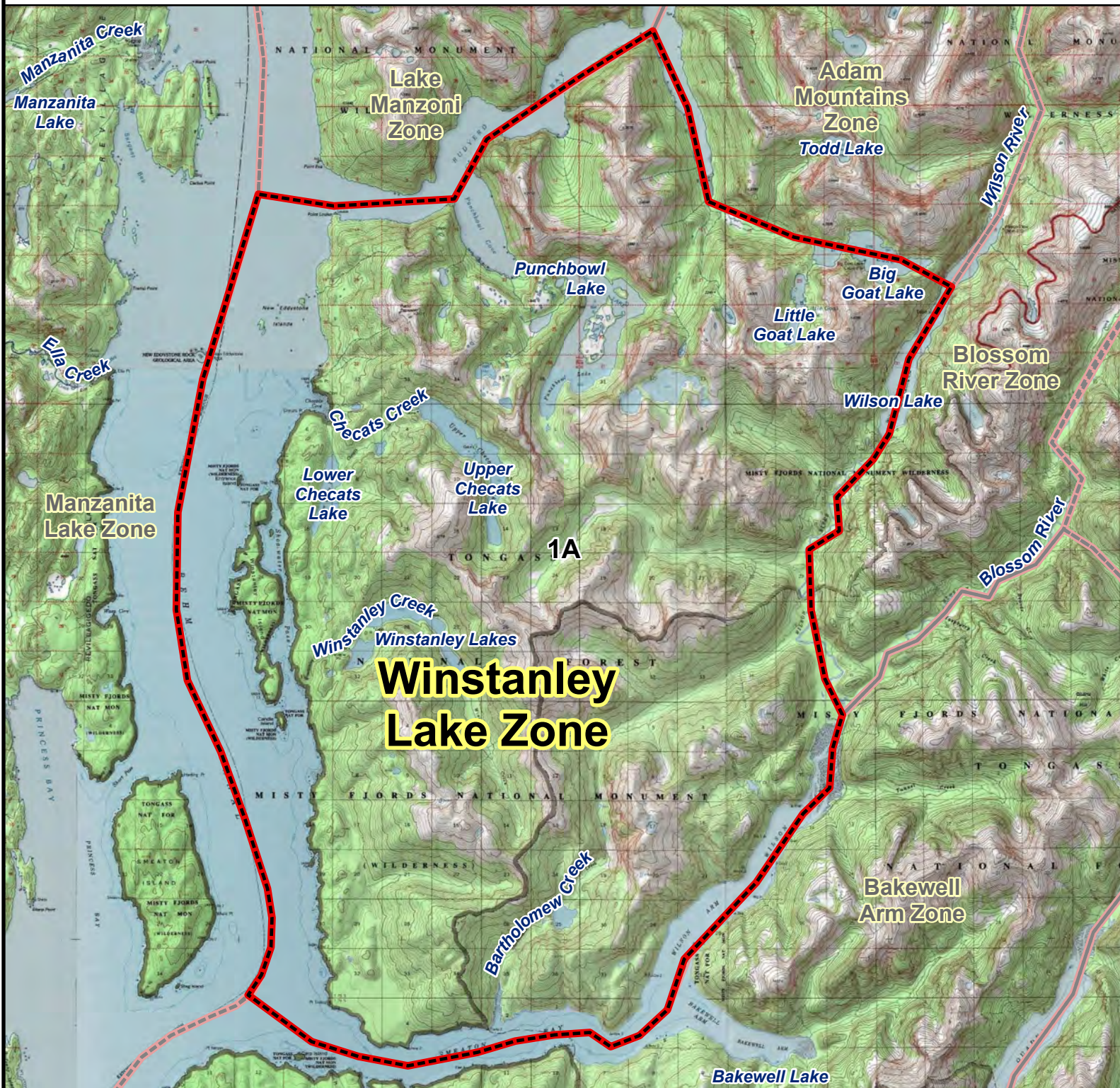


RG002 MOUNTAIN GOAT HUNT

Winstanley Lake Zone



Winstanley Lake Zone: Originating where Behm Canal and Rudyerd Bay intersect, east through Rudyerd Bay, then south through the south arm of Rudyerd Bay, east up the drainage to Big Goat Lake, east through Big Goat Lake to the lake's eastern end, then south into Wilson Lake at the GPS point N 55.523506, W -130.552186, southwest through Wilson Lake to the outlet of Wilson River, south through the center of the Wilson River to the head of Wilson Arm, southwest through Wilson Arm to Smeaton Bay, west through the center of Smeaton Bay to Behm Canal, north to the point of origin.

